

This section explains how you can resolve disputes with your employer and how the Labour Inspectorate can help you. It describes how to defend yourself from the actions or failure to act of the Labour Inspectorate and when you can write to the Ombudsman. [Contacts](#) for the State Labour Inspection Office and Regional Labour Inspectorates are provided at the end of this leaflet.

The Ombudsman's leaflets can be found at [www.ochrance.cz](http://www.ochrance.cz) under [I am not sure how to deal with a difficult life situation](#)



## What should I do if I have a dispute with my employer?

Disputes between employees and employers **are decided by the courts**. Sometimes a **mediator** can help you (more in the leaflet on [Mediation](#)). You can consult a lawyer (more in the leaflet on [Legal Aid](#)). Sometimes the Citizens Advice Bureau can also help you (see the leaflet [Citizens Advice Bureau](#) for more information).



## What if the employer does not comply with the regulations?

You can **write to your Regional Labour Inspectorate**. It will check compliance with labour law regulations and can fine the employer for breaches and can order the employer to remedy any deficiencies.



## Can the Labour Inspectorate advise me on what to do?

**Yes**, they will provide advice and basic information.

[Many materials](#) (on the termination of employment, non-payment of wages or working hours) can also be found **on the website of the State Labour Inspection Office** ([www.suip.cz](http://www.suip.cz) → *About us* → *Information materials*).



## Will the Labour Inspectorate ensure my wages are paid, will it protect me from being made redundant?

**No**. The Labour Inspectorate cannot order the payment of wages owed to you, nor can it assess whether the termination of employment is valid or not. Only a court can decide on that.



## How do I write to the Labour Inspectorate? What happens afterwards?

Write to **the regional labour inspectorate of the place where you work** and ask for an inspection of your employer (for more information on how to submit a complaint for inspection, see [www.suip.cz](http://www.suip.cz) → *Labour Relations* → [Lodging a complaint](#)).

The Labour Inspectorate **does not have to carry out the inspection**, but it must write to you and explain why.

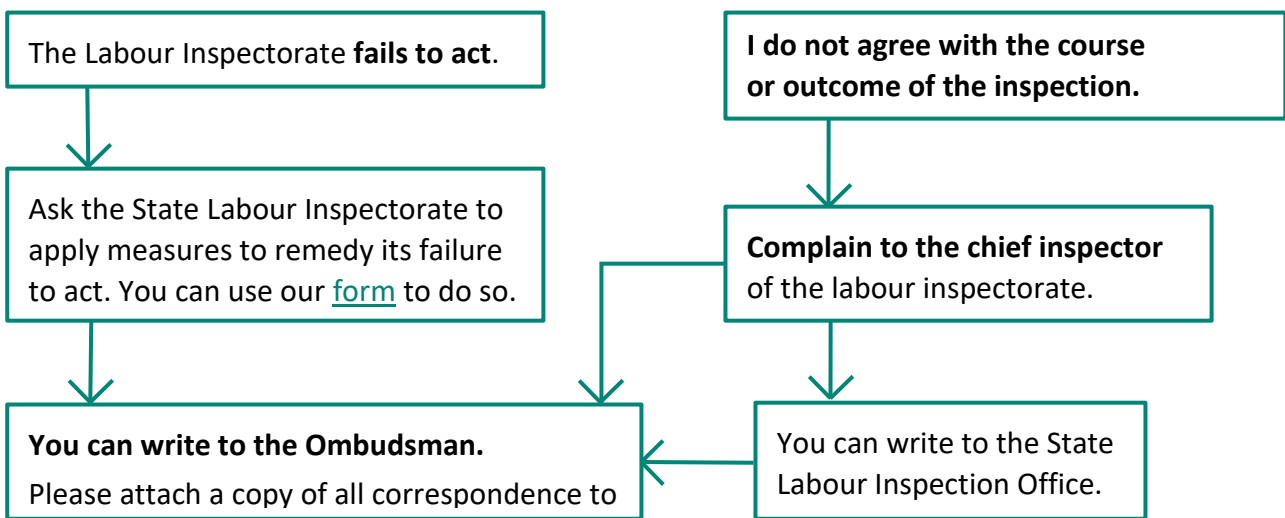
If it **inspects** the employer on the basis of your complaint, it must inform you **of the outcome in writing**.

## Where can I find more information on this?

Take a look at the following leaflets from the Ombudsman

- [Termination of employment](#)
- [Bullying at work \(Ten Commandments: How to help a victim of bullying at work\)](#)
- [Non-payment of wages, insolvency of the employer](#)

## How can I defend myself against the actions or failure to act of the Labour Inspectorate?



## What can the Ombudsman help me with?

The Ombudsman **can** verify the actions or failure to act of **the authorities**. Write to the Ombudsman if you disagree with the actions (or failure to act) of the **Labour Inspectorate** or **State Labour Inspection Office**.

Find out more in the leaflet [Ombudsman](#).

## What can't the Ombudsman help me with?

The Ombudsman **must not interfere in private relations, which include relations between employees and employers**, even if the employer is an authority.

## Contacts for the State Labour Inspection Office and Regional Labour Inspectorates (RLI)

### State Labour Inspection Office

✉ Kolářská 451/13, 746 01 Opava

☎ (+420) 950 179 101

✉ [opava@suip.cz](mailto:opava@suip.cz)

🌐 [www.suip.cz](http://www.suip.cz)

### RLI for the Capital City of Prague based in Prague

✉ Kladenská 103/105, 160 00 Praha 6

☎ (+420) 950 179 310

✉ [praaha@suip.cz](mailto:praha@suip.cz)

🌐 [www.suip.cz](http://www.suip.cz)

### **RLI for the Central Bohemian Region based in Prague**

✉ Ve Smečkách 29, 110 00 Praha 1

☎ (+420) 950 179 400

✉ [stredni.cechy@suip.cz](mailto:stredni.cechy@suip.cz)

🌐 [www.suip.cz](http://www.suip.cz)

### **RLI for the South Bohemian Region and the Vysočina Region based in České Budějovice**

✉ Vodní 1629/21, 370 06 České Budějovice

☎ (+420) 950 179 511

✉ [budejovice@suip.cz](mailto:budejovice@suip.cz)

🌐 [www.suip.cz](http://www.suip.cz)

#### **regional office in Jihlava**

✉ Třída Legionářů 4181/17, 586 01 Jihlava

☎ (+420) 950 179 512

✉ [jihlava@suip.cz](mailto:jihlava@suip.cz)

🌐 [www.suip.cz](http://www.suip.cz)

### **RLI for the Hradec Králové Region and the Pardubice Region based in Hradec Králové**

✉ Říční 1195, 501 01 Hradec Králové

☎ (+420) 950 179 800

✉ [hradec@suip.cz](mailto:hradec@suip.cz)

🌐 [www.suip.cz](http://www.suip.cz)

#### **regional office in Chrudim**

✉ Pardubická 310, 537 01 Chrudim

☎ (+420) 950 119 461

✉ [hradec@suip.cz](mailto:hradec@suip.cz)

🌐 [www.suip.cz](http://www.suip.cz)

### **RLI for the Pilsen Region and the Karlovy Vary Region based in Pilsen**

✉ Schwarzova 27, 301 00 Plzeň

☎ (+420) 950 179 611

✉ [plzen@suip.cz](mailto:plzen@suip.cz)

🌐 [www.suip.cz](http://www.suip.cz)

#### **regional office in Karlovy Vary**

✉ Svahová 1170/24, 360 01 Karlovy Vary

☎ (+420) 950 179 636

✉ [plzen@suip.cz](mailto:plzen@suip.cz)

🌐 [www.suip.cz](http://www.suip.cz)

(+420) 778 745 147

### **RLI for the Ústí nad Labem Region and the Liberec Region**

✉ SNP 2720/21, 400 11 Ústí nad Labem

☎ (+420) 950 179 711

✉ [usti@suip.cz](mailto:usti@suip.cz)

🌐 [www.suip.cz](http://www.suip.cz)

#### **regional office in Liberec**

✉ nám. dr. E. Beneše 26, 460 73 Liberec

☎ (+420) 950 179 736

✉ [liberec@suip.cz](mailto:liberec@suip.cz)

🌐 [www.suip.cz](http://www.suip.cz)

### **RLI for the South Moravian Region and the Zlín Region based in Brno**

✉ Milady Horákové 1970/3, 658 60 Brno

☎ (+420) 950 179 900

✉ [brno@suip.cz](mailto:brno@suip.cz)

🌐 [www.suip.cz](http://www.suip.cz)

#### **regional office in Zlín**

✉ Čiperova 5182, 760 42 Zlín

☎ (+420) 950 175 512

✉ [brno@suip.cz](mailto:brno@suip.cz)

🌐 [www.suip.cz](http://www.suip.cz)

### **RLI for the Moravian-Silesian Region and the Olomouc Region based in Ostrava**

✉ Živičná 2, 702 69 Ostrava

☎ (+420) 950 179 211

✉ [ostrava@suip.cz](mailto:ostrava@suip.cz)

🌐 [www.suip.cz](http://www.suip.cz)

#### **regional office in Olomouc**

✉ Tř. Kosmonautů 8, 779 00 Olomouc

☎ (+420) 950 179 201

✉ [ostrava@suip.cz](mailto:ostrava@suip.cz)

🌐 [www.suip.cz](http://www.suip.cz)

(+420) 950 179 203